



Edge Software

Quick Library Help

v1.0.0.0

Document rewritten as multi page HTML also to suit Solid Edge Add-In, not standalone program

Each page has a section of links to other pages at the top and bottom of the page

Overview

The Quick Library is a tool that speeds up re-use of your most commonly used parts or assemblies and also profile sections such as extrusions and frame profiles, allowing rapid selection and placement into an assembly that is being edited in Solid Edge.

New Libraries of Standard Parts, Assemblies or Section files (a short protrusion of a sketch) are easily added to the list of available sections. Properties of Library Parts are easily edited to create a readily accessible, customizable library which can draw from components anywhere on a network.

Configurations can be local or on a network location allowing one or many users.

Installation

1. Run setup.exe. This will download any required software that is not on your machine, and install the Quick Library Add-In for Solid Edge.
2. Note: You can enable / disable the Solid Edge Add-In at any time after it is installed from the Application Button / Add-Ins.

Un-installation

1. From Control Panel \ Add-Remove Software, uninstall Quick Library

Configuration Options

It is from the Configuration window that you set up the Quick Library to access library files from a network or locally. This is located in the Edge Software Toolbar on the Quick Library Tab.

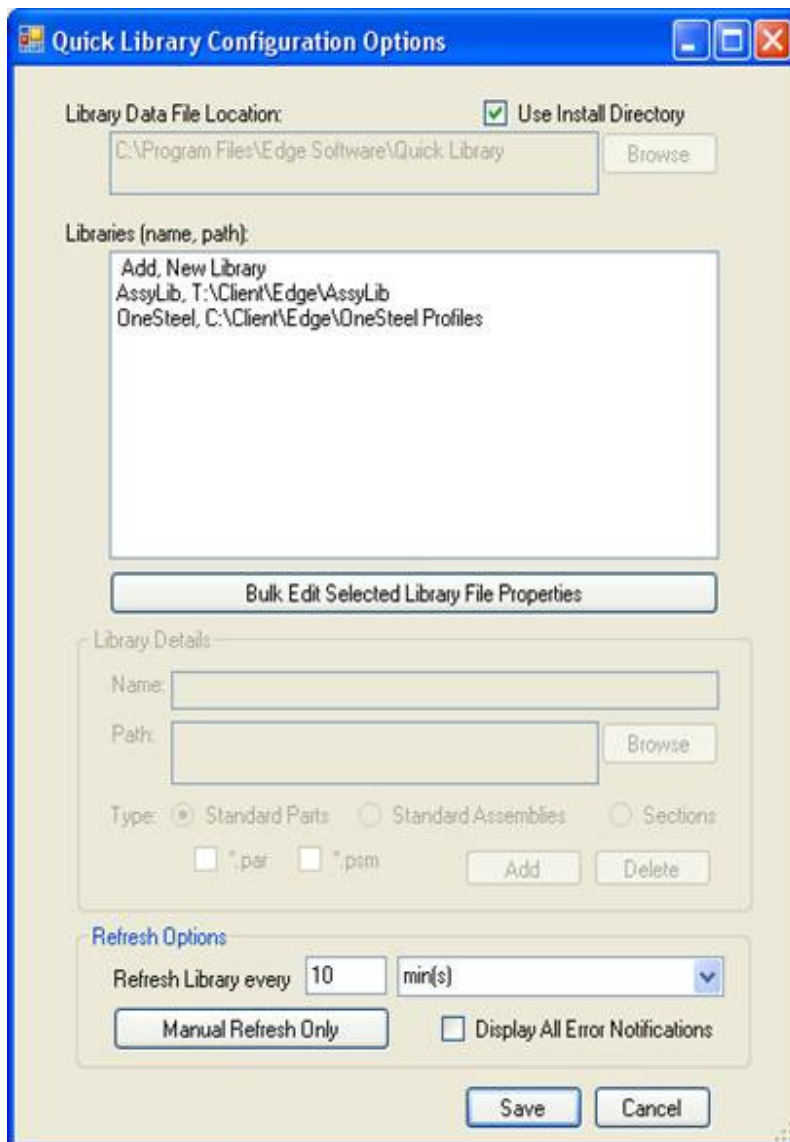
Local Install

This is the default option whereby the Data File Location is the Quick Library Install Directory

Network Install

Set the Data File Location to a Network Location. Setting all users Data File Location will ensure that all network users are using the same files and have access to the same files.

Ensure that no libraries are added where some users do not have access to the Library Path. If this happens some users will not be able to place parts from the offending Library.



Library Data File Location – The Library Data Files are files which store the library information. They are Sections.dat, Assydata.dat, Libraries.dat and LastUsed.ini which contain information relating to the Libraries and the directories the user has selected last.

Use Install Directory – Sets the Library Data File Location to be the same as the Quick Library Install Directory.

Libraries – Shows the current list of libraries and the paths they refer to. This list is selectable and brings up the Library Details for editing, or addition of new libraries by selecting “*Add New Library*”.

Bulk Edit Selected Library File Properties – Opens a new window to allow Spreadsheet style editing of file properties. Selecting a Library first limits the files displayed for edit to just that library. See *Bulk File Property Editor*.

Library Details

Name – Set or changes the display name of the Library (what the library is called in the Quick Library)

Path – Sets or changes the directory that contains the library files, can either type or Browse.

Type – Sets or changes the type of files that will be added to this library.

Add/Update – Adds / Updates the library Details into the Libraries List. (These changes are not saved to disk until Save is used)

Delete – Deletes the selected Library from the Libraries List. (These changes are not saved to disk until Save is used)

Refresh Options – Refreshing is checking the files in the library paths against the list in Quick Library to ensure the Quick Library is up-to-date. Quick library also checks that section files are valid sections.

Refresh Library Every – Set a frequency for refreshing. Uses the units selected following this.

Refresh Period – Sets the refresh period (minutes, hours, days, always or never). Always sets the time to 1, Manual sets the time to 0. The Quick Library checks the files to see when they were last updated and if the specified time has elapsed performs another check.

Manual Refresh only – Sets the time to 0 and the Refresh period to Manual. A manual refresh is performed by entering the Configuration Options and pressing Save.

Display All Error Notifications – Toggles error display during the refresh process.

Unchecked (Default) - Error notifications are written to file called

`LibraryFileErrors.txt`

(saved into the Data File Location) and a single notification is displayed at the end of the refresh.

Checked – Every error during the refresh displays a detailed notification prompt. Errors are

still written to a file as above.

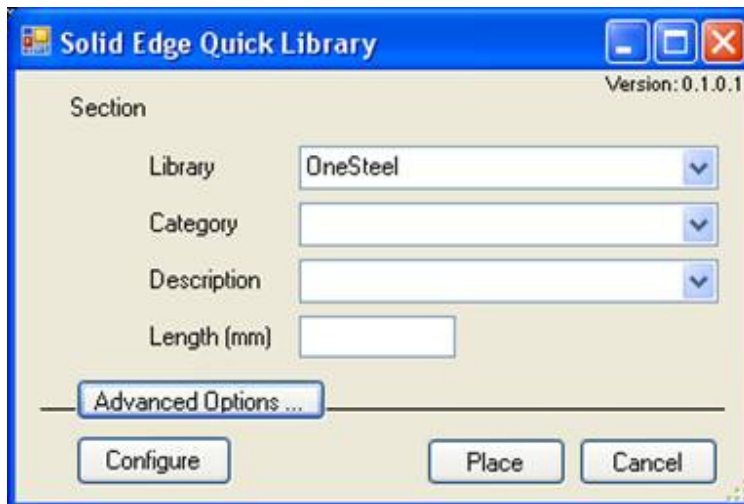
Save – Writes the selected options to disk and performs a Refresh with the new options.

Cancel – Closes Configuration Options and returns to the Quick Library with no Refresh.

Launching Quick Library

1. From within Solid Edge, Edge Software toolbar, Quick Library Tab, click the Quick Library Button. This will launch the Quick Library.

Using the Quick Library

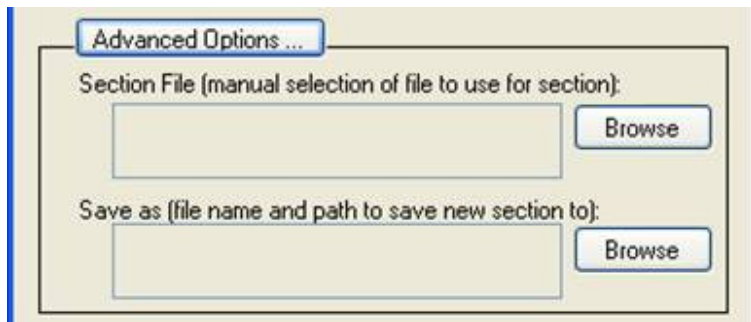


Library – Choose from the list of available libraries, which library you wish to select your component / section from.

Category – Library Sub-category (sub-directory) to select your component / section from.

Description – Choose which component /assembly / profile you wish to place into your assembly.

Preview Area – When a component has been selected a preview to the right of the selection boxes appears to show you the component (or profile if it is a section library) to be used.



Length – (for section libraries only) Specify the length of the section you wish to place.

Advanced Options – This gives access to features not often needed.

1. Section File. This allows sections that are not listed in the library to be selected for use, click Browse to manually choose a component file.
2. Save As. If you choose to over-ride the default option of placing the component in the directory of the current Assembly, click Browse to select the new save directory.

Configure – Opens the Configuration Options Dialog Box (see Configuration Options)

Place – Puts the selected component into the file that is currently being edited in Solid Edge (if it is an Assembly file) and activates the assembly relationships command for that component. The file name is incremented with a number (eg filename_1.ext) until a unique name is found.

Section – Generates a file (name incremented as above) from the specified section with the specified length and places this into the assembly.

Standard Part – Places a copy of the file (name incremented as above) into the assembly.

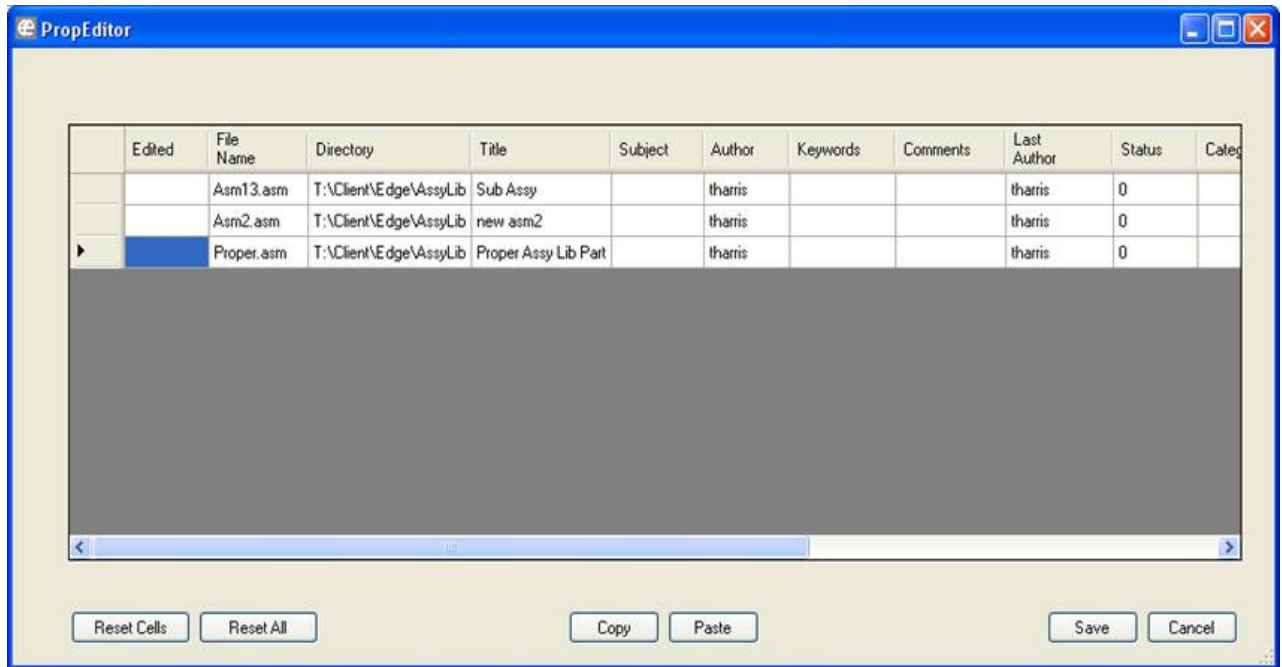
Standard Assembly – Places a copy of the top level assembly file (name incremented as above) into the assembly.

Cancel – Closes the Quick Library and returns to Solid Edge.

Bulk Property Editor

This allows for tabular editing of file properties / names / paths. It is located in the Configuration window.

Use the arrow keys or mouse to select the cell you want to edit and perform the edit. A mark will be made against that line to indicate it has been edited.



Reset Cells – Reset the selected cells to their original values.

Reset All - Reset the whole table to original values.

Copy – Copy the value of the current cell into a local Clipboard.

Paste – Paste the value copied to the local Clipboard into the selected cell(s).

Save – Save the changes made back to the files in the Library and exit the Bulk Property Editor.

Cancel – Ignore any changes made and exit the Bulk Property Editor.